

BPGSM 4C.

**METAL
ON-GROUND**

PLATFORM DESCRIPTION

It is made by two longitudinal beams with IPE. Transverse modules are inserted between them. They are screwed to the beams to facilitate the transport and installation of the platform.

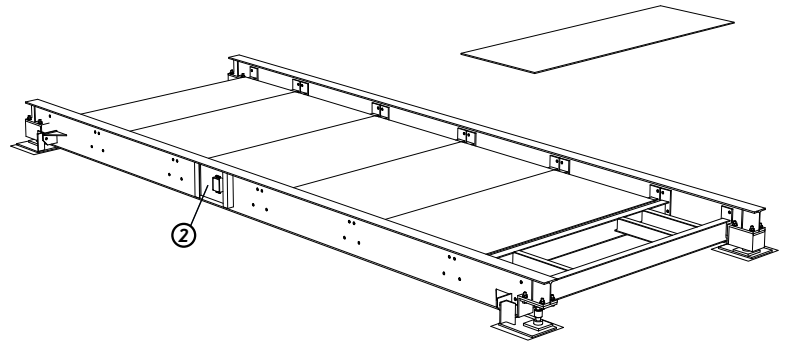
The rotation track is situated approximately 30 cm above the ground level. The modules are made by two longitudinal beams of IPE profile 200 mm. They are transversally united by a steel plate 10 mm. thick.

The access to the platform is made through concrete ramps with a maximum gradient of 10%.

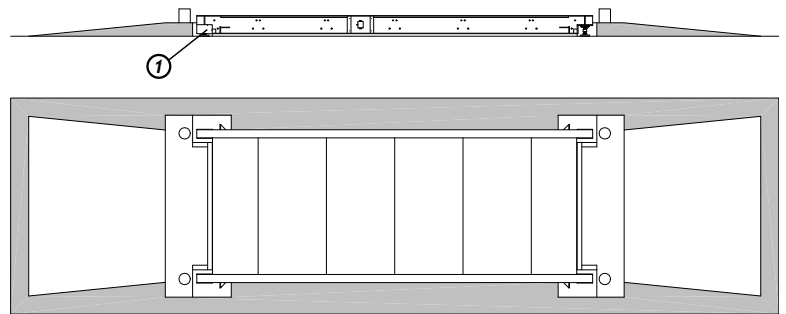
The end of the beams include the longitudinal safe limits of the scale movement and the four transverse safe limits, which are welded to the cell plates.

Load cells cables are routed through cable ducting secured on the weighbridge for added protection.

It is recommended the installation of an earthed cable, following M.I.BT039 instructions. (Not included in the service).



ON-GROUND SCHEME



TECHNICAL SPECIFICATIONS

Painting:

Corrosion inhibiting coating and blue finish enamel coating.

Connection box:

Metal junction box of 4 connections through IP65.

Cable length from the scale to the indicator:

15 m.

Load cells:

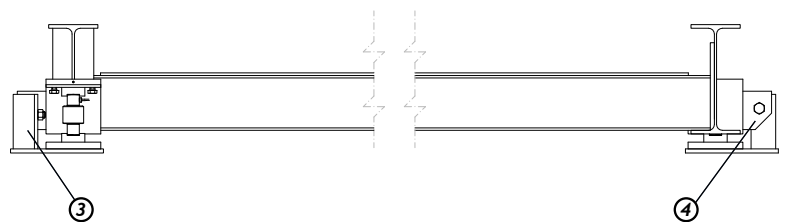
4 load cells,
mod. GIP / G-DI / HBM C-16 capacity 15 Tn.

Screwing:

8.8 zinc quality.
(Except screws inferior to M14).

1. Cells protection plate.
2. Cells connection register box.
3. Transverse side limits.
4. Longitudinal safe limits.

SAFE LIMITS DETAIL



| MODEL | STEP | TOTAL WEIGHT | Modules number 3000x1500 | Modules number 3000x1000 | BEAMS DIMENSIONS | BEAMS WEIGHT |
|-------------------|--------|--------------|--------------------------|--------------------------|------------------|--------------|
| BPGSM-4C 6x3 30t. | 10 Kg. | 3200 Kg. | 4 | - | 6700 mm | 400 Kg. |
| BPGSM-4C 8x3 30t. | 10 Kg. | 4480 Kg. | 4 | 2 | 8700 mm | 590 Kg. |

| MODULE | MODULE DIMENSIONS | MODULE WEIGHT |
|-------------|-------------------|---------------|
| 3000 x 1000 | 3190 x 1000 x 320 | 450 Kg. |
| 3000 x 1500 | 3190 x 1500 x 320 | 600 Kg. |



BPGSM 4C. 10x3

**METAL
ON-GROUND**

PLATFORM DESCRIPTION

It is made by two longitudinal beams with IPE 400 mm. profile. Transverse modules are inserted between them. They are screwed to the beams to facilitate the transport and installation of the platform.

The rotation track is situated approximately 30 cm above the ground level. The modules are made by two longitudinal beams of IPE profile 200 mm. They are transversally united by a steel plate 10 mm thick.

The access to the platform is made through concrete ramps with a maximum gradient of 10%.

The end of the beams include the longitudinal safe limits of the scale movement and the four transverse safe limits, which are welded to the cell plates.

Load cells cables are rooted through cable ducting secured on the weighbridge for added protection.

It is recommended the installation of an earthed cable, following M.I.BT039 instructions. (Not included in the service).

TECHNICAL SPECIFICATIONS

Painting:

Corrosion inhibiting coating and blue finish enamel coating.

Connection box:

Metal junction box of 4 connections through IP64.

Cable length from the scale to the indicator:

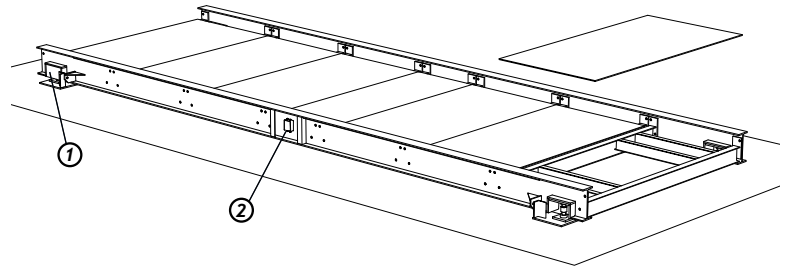
15 m.

Load Cells:

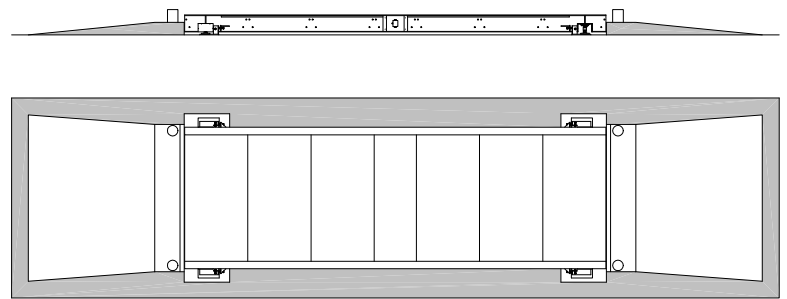
4 load cells,
mod. GIP / G-DI / HBM C-16 capacity 15 Tn.

Screwing:

8.8 zinc quality.
(Except screws inferior to M14).

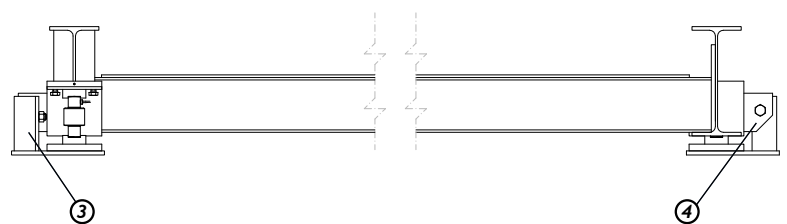


ON-GROUND SCHEME



1. Cells protection plate.
2. Cells connection register box.
3. Transverse side limits.
4. Longitudinal safe limits.

SAFE LIMITS DETAIL



| MODEL | STEP | TOTAL WEIGHT | Modules number 3000x1500 | Modules number 3000x1000 | BEAMS DIMENSIONS | BEAMS WEIGHT |
|--------------------|--------|--------------|--------------------------|--------------------------|------------------|--------------|
| BPGSM-4C 10x3 30t. | 10 Kg. | 5450 Kg. | 6 | 1 | 10000 mm | 700 Kg. |

| MODULE | MODULE DIMENSIONS | MODULE WEIGHT |
|-------------|-------------------|---------------|
| 3000 x 1000 | 3190 x 1000 x 320 | 450 Kg. |
| 3000 x 1500 | 3190 x 1500 x 320 | 600 Kg. |

BPGSM.

**METAL
ON-GROUND**

PLATFORM DESCRIPTION

It is made by two longitudinal beams united in the centre with IPE 500 mm profile. Between the four beams left, transverse modules are inserted. They are screwed to the beams to facilitate the transport and installation of the platform.

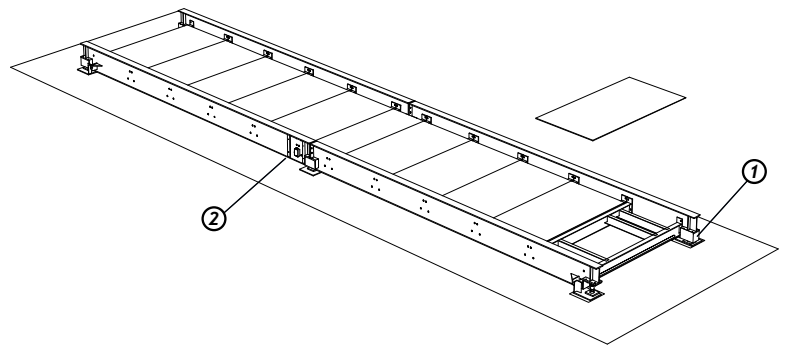
The rotation track is situated approximately 30 cm above the ground level. The modules are made by two longitudinal beams of IPE profile 220 mm They are transversally united by four IPE 160 mm and welded by a steel plate 10 mm thick.

The access to the platform is made through concrete ramps with a maximum gradient of 10%.

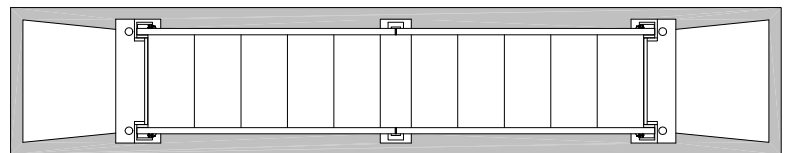
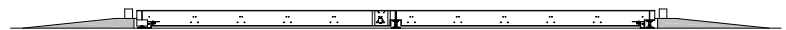
The end of the beams include the longitudinal safe limits of the scale movement and the four transverse safe limits, which are welded to the cell plates.

Load cells cables are routed through cable ducting secured on the weighbridge for added protection.

It is recommended the installation of an earthed cable, following M.I.BT039 instructions (Not included in our service).



ON-GROUND SCHEME



TECHNICAL SPECIFICATIONS

Painting:

Corrosion inhibiting coating and blue finish enamel coating.

Connections box:

Metal junction box of 6 connections trough IP65.

Cable length from the scale to the indicator:

15 m.

Load cells:

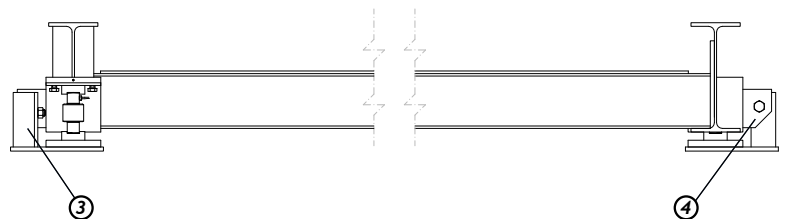
6 load cells,
mod. GIP / G-DI / HBM C-16 capacity 20 Tn.

Screwing:

8.8 zinc quality.
(Except screws inferior to M14)

1. Cells protection plate.
2. Cells connection register box.
3. Transverse side limits.
4. Longitudinal safe limits.

SAFE LIMITS DETAIL



| MODEL | STEP | TOTAL WEIGHT | Modules number 3000x1500 | Modules number 3000x1000 | Modules number 3000x2000 | BEAMS DIMENSIONS | BEAMS WEIGHT |
|-----------------|--------|--------------|--------------------------|--------------------------|--------------------------|------------------|--------------|
| BPGSM 12x3 60t. | 20 Kg. | 7550 Kg. | 6 | 3 | - | 6360 mm | 590 Kg. |
| BPGSM 14x3 60t. | 20 Kg. | 8565 Kg. | 8 | - | 1 | 7360 mm | 680 Kg. |
| BPGSM 16x3 60t. | 20 Kg. | 9850 Kg. | 10 | 1 | - | 8360 mm | 770 Kg. |
| BPGSM 18x3 60t. | 20 Kg. | 11190 Kg. | 10 | 3 | - | 9360 mm | 870 Kg. |

| MODULE | MODULE DIMENSIONS | MODULE WEIGHT |
|-------------|-------------------|---------------|
| 3000 x 1000 | 3190 x 1000 x 320 | 470 Kg. |
| 3000 x 1500 | 3190 x 1500 x 320 | 630 Kg. |
| 3000 x 2000 | 3190 x 2000 x 320 | 805 Kg. |