

BPBSH

BBB2H

GREAT CAPACITY (80-100t)

*Concrete scale to be installed on ground
width of the bearing area: 3m.*

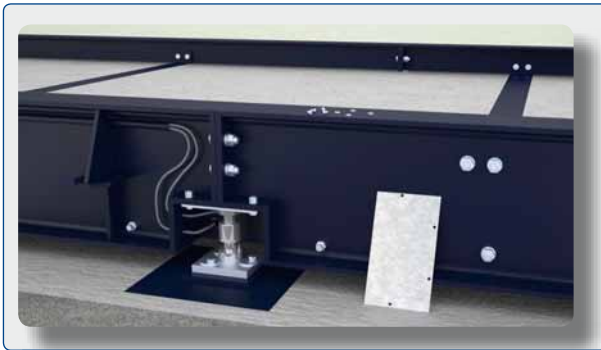
Unidirectional.



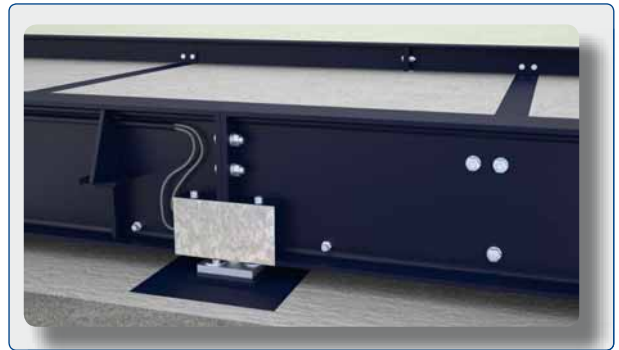
DESCRIPTION

DESCRIPTION

- Scales of the **BPBSH great capacity series are metal scales with a bearing area of 3 m in width** for the weighing of vehicles.
- Scales BPBSH are built to be installed on-ground, for its **UNIDIRECTIONAL** use.
- Scales BPBSH have a bearing area of concrete.
- The structure is composed by longitudinal beams IPE-450 for 80t scales and IPE-500 for 100t scales. The reinforcement of each concrete slab consists on a grid of metal rod of Ø20millimeters and sections of mesh with an area of 150x150xØ10 mm. In the longitudinal joints, there is a module of sheet metal 10millimeters thick.
- The height of the weight area is **355 mm for 80t scales and 385 mm for 100t scales**. This low height signifies less waste in the civil work because it requires relatively short ramps for its installation.
- Longitudinal beams are used as guides to orientate the vehicles on the scale.
- The **capacities** of the BPBSH great capacity series are 80t and 100t.
- The receiving of the weight is done through cells of analogical compression, but it is possible to adapt it to other types of load cells of the market for especial purposes. The view of the weight and the different uses which can be realized from the data of the weight vary depending on the indicators or equipments that the customers choose depending on their necessities.



- BPBSH great capacity scale with compression cells, model GIP.



- Connection of the beams and the cross-beams, through zinc screws of 8.8.quality.



- Cabinet to guard the junction box and the cables of the scale.



- Closet cover installed with specifications plate screwed on it.



- Access to the limits and to the load cells from the sides of the scales.



- Cells are protected from the outside through a galvanized sheet.

INSTALLATION

- Scales BPBSH great capacity must be installed on-ground.
- Access ramps are necessary and must have a slope of 10%.
- The height of the weighing area is 355 mm for 80t scales and 385 mm for 100t scales.

INSTALLATION PROCEDURE

1. Assembly of the structure of civil works, on a plastic for formwork.



2. Placement of reinforcement and concreting.



3. Lifting of the scale, placement of the load cells and completion of the access ramps.



SPECIFICATIONS

Dimensions (length x width)	Height (mm)	Capacity (t)	Fraction (kg)	Cells number
14x3 m	355	80	50	8
16x3 m	355	80	50	8
17,5x3 m	355	80	50	8
18x3 m	355	80	50	8
14x3 m	385	100	50	8
16x3 m	385	100	50	8
17,5x3 m	385	100	50	8
18x3 m	385	100	50	8

ACCESSORIES

- **DIGITAL LOAD CELLS**
Model GIPD. IP68. 3000 d OIML R60.
- **ACCESSORIES FOR THE BUILDING**
 - Perimeter angle for the building ramps (input and output for on-ground scales).
 - Headboards. To support access ramps.
 - Metal ramps.
 - Cubicles.
 - Root plates.
- **SPECIAL PAINTING**
 - Gushed beams and cross beams, with special paint.
- **INDICATORS**
 - They can be used with width types of weight indicators. The type of indicators we sell go from the most basic weight indicators (weight-tare indicators with or without printing) to indicators with special functions (alphanumerical, with connection to PC, with data base management, with control of traffic lights, for especial zones) . In this way we facilitate to the customer the possibility to choose the best solution for his/her necessities in the management of weight.



Unit 15 Dunshaughlin Business Park, Dunshaughlin, Co Meath
Tel: +353 1 824 0400 Email: sales@riteweigh.ie Web: www.riteweigh.ie