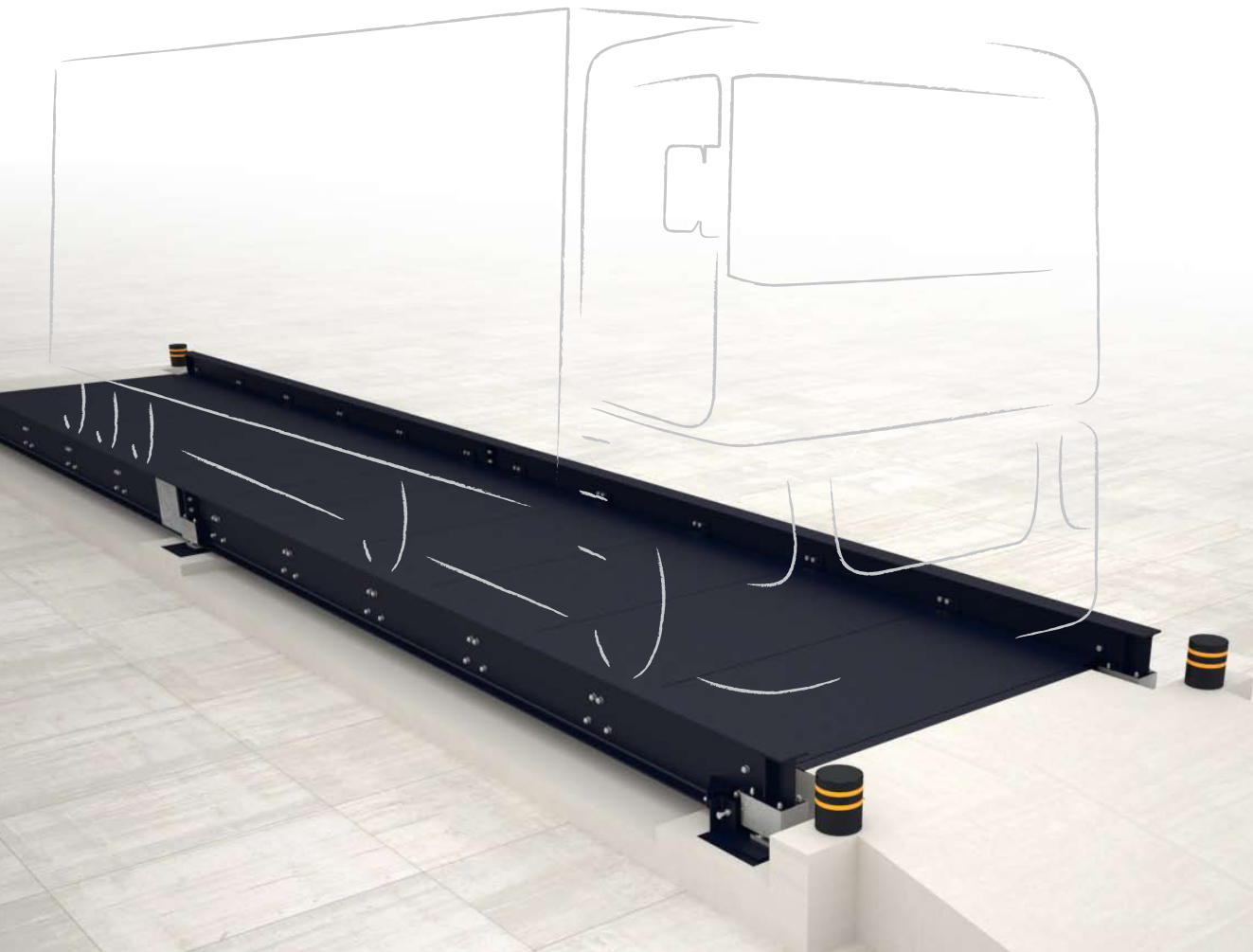


# BPGSM

---

# BbE2W

*Metal scale to be installed on-ground*  
*Width of the Bearing area: 3m.*  
*Unidirectional.*



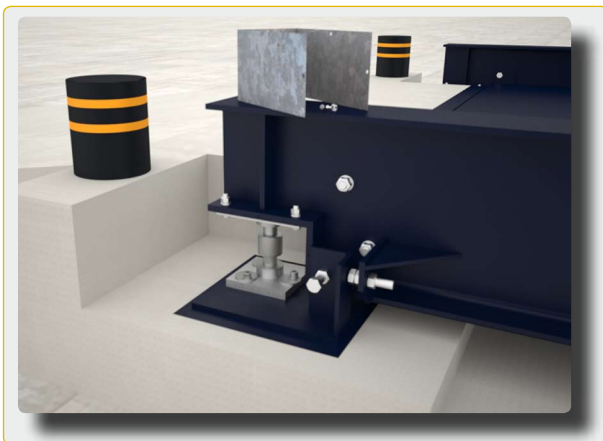
## DESCRIPTION

DESCRIPTION

- Scales of the **BPGSM series** are **metal scales with a bearing area of 3 m in width** for the weighing of vehicles which can circulate on road.
- Scales BPGSM are built to be installed on-ground, for its **UNIDIRECTIONAL** use.
- Scales BPGSM have a bearing area of flange sheet 10 mm thick.
- The structure consists of longitudinal beams of IPE-500 joined transversally by metal modules of structure in metal outline and tearing sheet which form the bearing area. The reduced dimensions and the poor weight of the modules facilitate its use during its assembly.
- The height of the weight area is goes **from 290 to 310 mm (according to dimensions)**. This low height signifies less waste in the civil work because it requires relatively short ramps for its installation.
- Longitudinal beams are used as guides to orientate the vehicles on the scale.
- The **capacities** of the series BPGSM oscillate **from 30.000 to 60.000 kg** depending on the dimensions which can be from 6x3 m. to 18x3 m.
- The receiving of the weight is done through cells of analogical compression, but it is possible to adapt it to other types of load cells of the market for especial purposes. The view of the weight and the different uses which can be realized from the data of the weight vary depending on the indicators or equipments that the customers choose depending on their necessities.



- Connection of the beams and the cross-beams, through zinc screws of 8.8.quality.



- Scale BPGSM with the compression cells GIP model. The cells are protected from the outside through a galvanvanized sheet.
- Access to the limits and to the load cells from the sides of the scales.



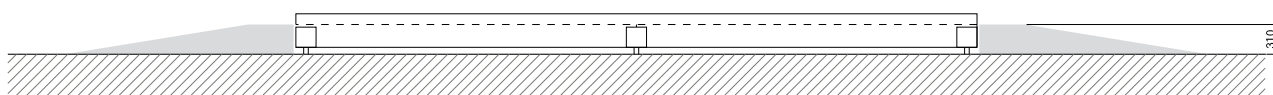
- Box to keep the connections box and the cables of the scale.

## INSTALLATION

INSTALLATION

- Scales BPGSM must be installed on-ground.
- Access ramps are necessary and must have a slope of 10%.
- The height of the weighing is of 290 / 310 mm according to the dimensions of the scale.

ON-GROUND



BPGSM

## SPECIFICATIONS

## SPECIFICATIONS

Dimensions (length x width)	Height (mm)	Capacity (t)	Fraction (kg)	Cells number
6x3 m	290	30	10	4
8x3 m	290	30	10	4
10x3 m	290	30	10	4
12x3 m	310	60	20	6
14x3 m	310	60	20	6
16x3 m	310	60	20	6
18x3 m	310	60	20	6

## ACCESSORIES

## ACCESSORIES

- **DIGITAL LOAD CELLS**  
Model GIPD. IP68. 3000 d OIML R60.
- **ACCESSORIES FOR THE BUILDING**
  - Perimeter angle for the building ramps (input and output for on-ground scales).
  - Headboards. To support access ramps.
  - Metal ramps.
  - Cubicles.
  - Root plates.
- **SPECIAL PAINTING**
  - Gushed beams and cross beams, with special paint.
- **INDICATORS**
  - They can be used with width types of weight indicators. The type of indicators we sell go from the most basic weight indicators ( weight-tare indicators with or without printing) to indicators with special functions ( alphanumeric, with connection to PC, with data base management, with control of traffic lights, for especial zones ). In this way we facilitate to the customer the possibility to choose the best solution for his/her necessities in the management of weight.



**Unit 15 Dunshaughlin Business Park, Dunshaughlin, Co Meath**

**Tel: +353 1 824 0400 Email: [sales@riteweigh.ie](mailto:sales@riteweigh.ie) Web: [www.riteweigh.ie](http://www.riteweigh.ie)**